

HUI SUN § COFFEE

Special Menu

藝大店 / 陽明店

• 早午餐 Brunch •

供應時間 | 上午 8 : 00 - 10 : 50

附餐任選一飲品

| | H | I |
|------------------|---|---|
| 鮮奶 Milk | ● | ● |
| 柳橙汁 Orange juice | | ● |
| 紅茶 Black tea | ● | ● |
| 美式咖啡 Americano | ● | ● |

| | | | |
|--|-------|---|-------------|
| 樂活蔬食麵包餐 Vegetable with bread meal | \$180 | ● | Kcal 375 |
| 厚切腿排吐司蔬果餐 Grilled chicken sandwich | \$200 | ● | 566 |
| 德式香腸豐盛早午餐 Sausage and egg salad with croissant | \$220 | ● | 530 |

• 精選套餐 Limited offer •

| | | | |
|---|-------|---|-------------|
| 焗烤奶油蔬菜千層麵 Vegetarian lasagne | \$220 | ● | Kcal 378 |
| 焗烤奶油海鮮千層麵 Seafood lasagne | \$220 | ● | 385 |
| 現烤起司岩燒雞腿排餐 Grilled chicken leg with cheese and rice | \$260 | ● | 527 |
| 紙包檸檬鮮魚餐 Fish and vegetables in parchment | \$240 | ● | 498 |

SAVORING THE
FLAVORS OF TAIWAN.

餐點熱量不含飲品

• 鮮果汁 Juice •

| | | Kcal |
|-------------------------------|-----|------|
| Tree top 100% 蘋果汁 Apple juice | 95 | 144 |
| 奇異果汁 Fresh kiwi juice | 110 | 105 |
| 柳橙汁 Fresh orange juice | 110 | 120 |
| 蜂蜜檸檬汁 Honey lemon juice | 110 | 105 |
| 奇異果蘋果汁 Kiwi apple juice | 120 | 132 |
| 香蕉牛奶 Banana milk | 110 | 160 |

• 冰沙 Smoothie •

| | | Kcal |
|----------------------|-----|------|
| 檸檬冰沙 Lemon smoothie | 120 | 348 |
| 芒果冰沙 Mango smoothie | 120 | 366 |
| 咖啡冰沙 Coffee smoothie | 130 | 195 |

• 氣泡飲 Sparkling •

| | | Kcal |
|--|-----|------|
| 蜂蜜檸檬氣泡飲 Sparkling honey lemonade drink | 130 | 65 |
| 乳酸氣泡飲 Sparkling calpis drink | 130 | 117 |
| 芒果氣泡飲 Sparkling mango drink | 130 | 120 |

Meal

蛋奶素

• 輕食 Light meal •

| | | Kcal |
|--|-----|------|
| 季節水果沙拉(附麵包) Fruit salad | 130 | 200 |
| 燻雞鮮蔬沙拉(附麵包) Chicken salad | 130 | 319 |
| 厚切鮭魚蔬菜三明治 Tuna vegetable sandwich | 130 | 450 |
| 法式潛艇堡(燻雞/鮭魚/蔬果) | 95 | 265 |
| Submarine sandwich (chicken/ tuna/ vegetable) | | 420 |
| 厚切雞蛋沙拉烤吐司 Egg salad with toast | 90 | 430 |
| 澳式酪梨蛋麵包 Smashed avocado bread with egg | 70 | 280 |
| 湯塚麵包 Soup bread | 60 | 150 |
| 黑麥蜂蜜麵包佐蛋沙拉 Rye honey bread with egg salad | 70 | 330 |
| 鮮奶厚片(奶油/巧克力/香蒜/奶酥/蜂蜜/花生) | 45 | 248 |
| Toast (butter/chocolate/garlic/coconut/honey/peanut) | | 378 |
| 玉米濃湯 Corn soup | 40 | 108 |

• 甜點 Dessert •

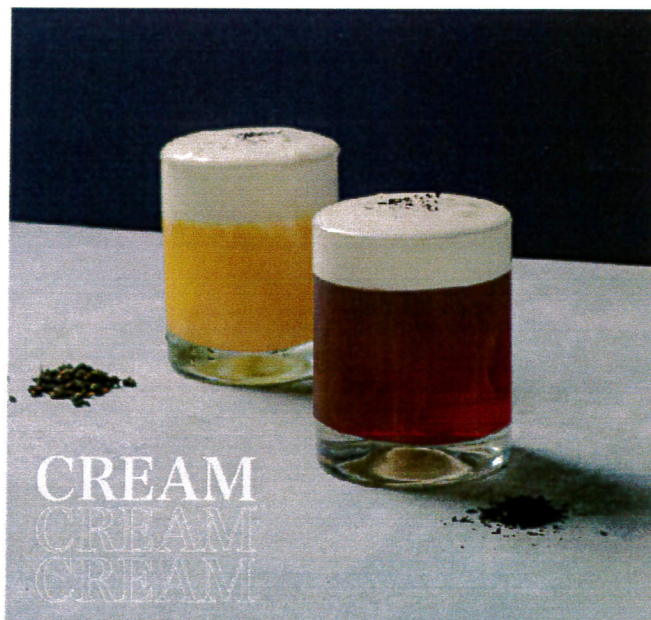
| | | Kcal |
|--------------------------------------|-----|------|
| 原味鬆餅(蜂蜜/巧克力) Waffle(honey/chocolate) | 90 | 482 |
| | | 506 |
| 季節水果鬆餅 Fruit waffle | 130 | 404 |
| 鮭魚蔬菜鬆餅 Tuna waffle | 140 | 425 |
| 香蕉巧克力冰淇淋鬆餅 | 140 | 403 |
| Banana chocolate & Ice cream waffle | | |
| 黑糖珍珠冰淇淋鬆餅 | 150 | 542 |
| Brown sugar pearl ice cream waffle | | |
| 冰淇淋鬆餅 Ice cream waffle | 130 | 480 |
| 精緻蛋糕 Delicate cake | 89 | 342 |
| 德式布丁 Classic creme brulee | 99 | 268 |
| 惠孫咖啡凍 Huisun coffee jelly | 40 | 100 |

• 簡餐 Meal •

| | | Kcal |
|---|-----|------|
| 雞絲麵 Chicken flavor noodle with fish & Pork meat ball | 95 | 472 |
| 手工水餃(//粒) Dumpling | 100 | 586 |
| 三杯杏鮑菇飯 Three cups king oyster mushrooms with rice | 160 | 322 |
| 咖哩牛肉飯 Curried beef with rice | 160 | 622 |
| 番茄牛肉飯 Tomato and beef stew with rice | 170 | 615 |
| 黑胡椒肉片飯 Black pepper pork with rice | 170 | 402 |
| 糖醋排骨飯 Sweet and sour pork ribs with rice | 170 | 447 |
| 迷迭香去骨雞腿飯 Rosemary flavor boneless chicken leg with rice | 170 | 624 |
| 花雕雞飯 Shaoxing wine chicken with rice | 175 | 461 |

簡餐均附紅茶(熱/冰) 換飲料可折抵\$45

| | |
|------------------|------|
| 加購 A套餐 附濃湯+咖啡凍 | +59 |
| B套餐 附濃湯+蛋糕 | +109 |



- 藝大店簡餐供餐時間：平日 11:00 - 19:00 | 假日 11:00 - 19:30
- 禮明店簡餐供餐時間：週一至週日 11:00 - 18:30
- 下午茶時間：週一至週五 14:00 - 16:30。單點飲料+精緻蛋糕享85折優惠(不得與其他優惠一併使用)。

- 個人最低消費一杯飲品。
- 用餐時間兩小時，用餐完畢請協助回收餐具。
- 請主動出示本校教職員證、學生證或校友證以享特約折扣(無證件恕無折扣，咖啡豆與自有產品不在此折扣優惠內)。



HUI SUN ☪ COFFEE

MENU

SAVORING THE FLAVORS OF TAIWAN.

藝大店 / 陽明店

Coffee

· 手作咖啡 Pour over ·

| | H | I | Kcal |
|--|-----|---|------|
| ● 100%台灣豆 100%Taiwan huisun coffee 紅標 | 140 | ○ | 4 |
| ● 25%台灣豆 25%Huisun coffee 紅標 | 110 | ○ | 4 |
| ● 耶加雪菲G2 Yirgacheffe 紅標/手沖 | 120 | ○ | 2 |
| ● 肯亞AA Kenya 紅標/手沖 | 130 | ○ | 3 |
| ● 紅玉紅茶咖啡 Ruby blake tea coffee 紅標/手沖 | 120 | ○ | 4 |
| ● 1996冰咖啡 1996 iced coffee | 100 | ○ | 183 |

· 義式咖啡 Espresso ·

| | | | |
|--|-----|-----|-----|
| ● 濃縮咖啡 Espresso | 80 | ○ ○ | 6 |
| ● 美式咖啡 Americano | 85 | ○ ○ | 16 |
| ● 焦糖瑪奇朵 Caramel macchiato | 90 | ○ ○ | 257 |
| ● 卡布奇諾 Cappuccino | 110 | ○ ○ | 216 |
| ● 焦糖卡布奇諾 Caramel cappuccino | 120 | ○ ○ | 250 |
| ● 原味拿鐵 Coffee latte | 110 | ○ ○ | 245 |
| ● 摩卡拿鐵 Coffee mocha latte | 120 | ○ ○ | 220 |
| ● 榛果拿鐵 Hazelnut coffee latte | 120 | ○ ○ | 254 |
| ● 焦糖拿鐵 Caramel coffee latte | 120 | ○ ○ | 234 |
| ● 小農米香拿鐵 Puffed rice latte | 120 | ○ ○ | 210 |
| ● 冰淇淋咖啡 Ice floating coffee | 120 | ○ | 212 |
| ● 惠孫咖啡凍飲 Huisun coffee with coffee jelly | 120 | ○ | 120 |
| ● 西西里咖啡 Sicilian coffee | 120 | ○ | 143 |
| ● 氣泡咖啡 Sparkling coffee drink | 130 | ○ | 16 |
| ● 玫瑰鹽奶蓋咖啡 Coffee with cream | 130 | ○ | 190 |

咖啡因含量 ● 超過201毫克 ● 介於200至100毫克 ● 低於100毫克

咖啡豆產地 台灣、瓜地馬拉、印尼、巴西

Drink

· 茶飲 Drink ·

| | H | I | Kcal |
|--|-----|-----|------|
| 錫蘭紅茶 Ceylon black tea | 50 | ○ ○ | 0 |
| 蜂蜜紅茶 Honey black tea | 60 | ○ | 37 |
| 檸檬紅茶 Black tea with lemon | 60 | ○ ○ | 14 |
| 奶蓋紅茶 Black tea with cream | 70 | ○ | 150 |
| 金萱茶 Jinxuan tea | 70 | ○ | 0 |
| 蜂蜜金萱茶 Honey jinxuan tea | 75 | ○ | 37 |
| 檸檬金萱茶 Jinxuan tea with lemon | 75 | ○ ○ | 14 |
| 奶蓋金萱 Jinxuan tea with cream | 85 | ○ | 142 |
| 惠孫奶茶 Hui Sun milk tea | 70 | ○ ○ | 251 |
| 桂花烏梅汁 Black plum juice | 70 | ○ ○ | 148 |
| 伯爵奶茶 Earl grey milk tea | 95 | ○ ○ | 227 |
| 紅茶拿鐵 Black tea latte | 95 | ○ ○ | 227 |
| 可可鮮奶 Ovaltine milk | 95 | ○ ○ | 278 |
| 黑糖珍珠奶茶 Brown sugar pearl milk tea 茶角標 | 90 | ○ ○ | 435 |
| 黑糖珍珠鮮奶 Brown sugar pearl milk 鮮奶角標 | 110 | ○ ○ | 335 |

· 壺茶 Tea ·

| | | | |
|--------------------------------------|-----|---|-----|
| 伯爵紅茶 Earl grey | 130 | ○ | 0 |
| 金萱茶 Jinxuan tea | 130 | ○ | 0 |
| 鮮桔香柚茶 Hot kumquat tea | 150 | ○ | 158 |
| 桂圓紅棗茶 Red dates tea | 160 | ○ | 113 |
| 德國有機舒福茶 Organic comfortable tea | 160 | ○ | 0 |
| 有機荔香洋甘菊茶 Organic camomile lychee tea | 160 | ○ | 0 |

含糖熱量 全糖80大卡 · 半糖40大卡 · 微糖約27大卡

茶葉產地 綠茶：南投縣名間鄉 · 紅茶：越南

